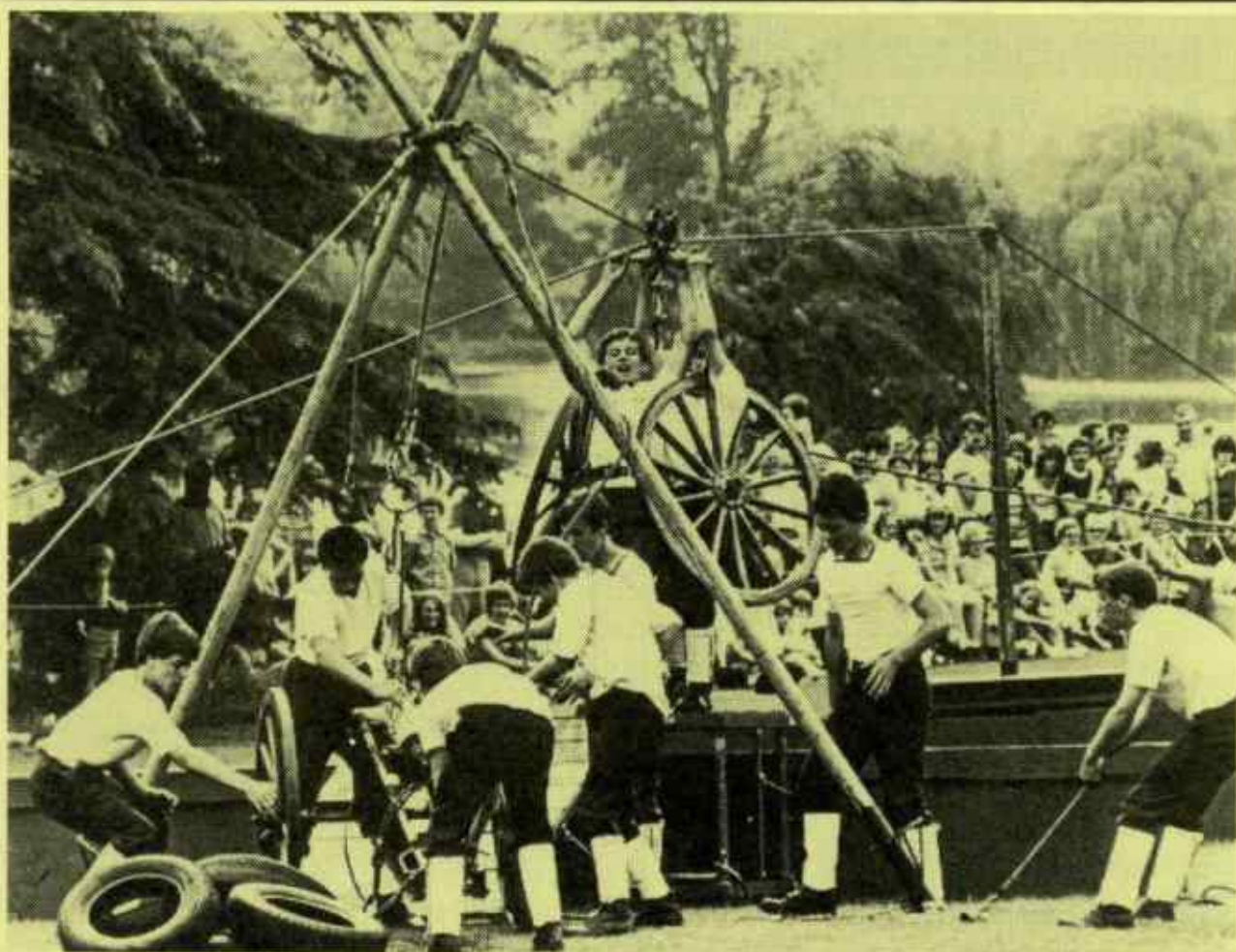


# HAREFIELD CARNIVAL

June 7th 1986

---



T.S. STIRLING FIELD GUN DISPLAY TEAM

---

## AT HAREFIELD HOSPITAL

Procession will enter Hospital grounds  
at approximately 1.30 p.m.

Programme 20p

WIN £100  
coupon inside

# Barbara & Barrie Hind

INVITE YOU TO PERSONAL  
AND PLEASANT SERVICE AT THE SHOP IN HAREFIELD FOR A LARGE  
RANGE OF GOODS ONLY EQUALLED BY THE LARGER STORES.

We hold a wide range of Mens, Womens, Children's and Babywear - Not to mention  
Fancy Goods, Crystal Glass, Jewellery and Toys.

Area stockists for Emu and Patons Wools, Kayser and Wolsley Hosiery, Playtex  
and Lovable Bras and Girdles, plus many other famous brands.

B. & B. HIND 12 HIGH STREET, HAREFIELD, MIDDLESEX. Telephone: 2193

## HAREFIELD TENNIS CLUB PRIORY AVENUE

*New members welcome  
for both*

*Social and League Tennis*

VERY REASONABLE SUBSCRIPTIONS

*For details, apply to Secretary:*

**NORTHWOOD 26541**

## THE HAREFIELD ESTATE AGENTS

For buying and selling property in  
this and the surrounding area

## ARCHER & MAY

5 Park Lane, Harefield

Telephone: Harefield 3202

I.O.P.

C.O.R.G.I.

## J. F. Heppelthwaite LIMITED

**HEATING AND PLUMBING**

Telephone: HAREFIELD 3325

## THE CHALFONT LINE

(Prop: T. J. Reynolds)

### Kings Arms Service Station CAR REPAIRS

12-16 SEATER LUXURY COACHES

Also 12-49 SEATER COACHES with  
lifts for Physically Disabled

Telephone: HAREFIELD 4860

Housewives who insist on  
GOOD QUALITY AND  
VALUE FOR MONEY

in  
FRUIT AND VEGETABLES go to

## D. DONOVAN

22 High Street, Harefield

ORDERS DELIVERED

Telephone: Harefield 3064

FOR ALL TYPES OF FENCING

## Trimlock Fencing

Peter Timms

226 NORTHWOOD ROAD  
HAREFIELD, MIDDLESEX

Telephone: Harefield 4188

# T.S. STIRLING FIELD GUN DISPLAY TEAM

## **Professional**

The gun crew were formed in September 1977 by the C.O. Lt. Cdr. P. W. Sherwin RNR and now consists of a full tun with two teams. The teams annually contest the coveted Field Gun Trophy presented by the Lord Mayor of Birmingham. Each run is carefully marked and timed as per the senior display and assistance has been provided by Portsmouth Command Field Gun Crew who pay frequent visits to the Unit to test the equipment and keep the training up to date which is returned by the Unit's Annual pilgrimage to support the Field Gun at Earl's Court. The Unit appears regularly alongside the professionals, i.e. White Helmets, Red Devils and many others.

## **The Run Out**

The display commences with the run out . . . The guns are raced from the start line down the side of the arena where they are manhandled over the 4ft wall. Within seconds the guns and equipment are over and the Sheer legs (120lb each) are set up in position, enabling the first two cadets to swing across the 20ft chasm. The 10ft spar follows and the main wire set up, the gun dismantled and taken across to the enemy side, the limber follows and all goes through a small hole in the enemy wall of only 4ft x 2ft where it is re-assembled and an action of 3 rounds fired.

## **The Run Back**

The run back sees the cadets and equipment withdrawn over the enemy wall and back across the chasm, all the equipment must be returned to the home side and an action of 3 rounds fired before the clock is stopped. Finally the run home, nearly ½ ton of gun is raced through the hole in the home wall, re-assembled and back over the finish line in less than 25 seconds.

---

# CARNIVAL PRINCESS

The Carnival Princess has been selected from the young girls of Harefield and will be riding in the leading float.

\* SMASH THE CROCKS  
\* COCONUT SHY

# PROGRAMME

\* SPIN A WHEEL  
\* TOMBOLAS

**STALLS**

**PUNCH AND JUDY**

**TRAIN RIDES**

**PONY RIDES**

**CANDY FLOSS**

**ICE CREAM**

2.00 pm ARENA 1 FANCY DRESS

2.30 pm ARENA 1 SEA CADET GUN RACE

3.00 pm ARENA 2 PUNCH AND JUDY

3.30 pm ARENA 1 SCHOOL GYMNASTS

4.00 pm ARENA 1 THE HAVERETTES GIRLS MARCHING BRASS BAND

4.00 pm ARENA 2 PUNCH AND JUDY

4.30 pm ARENA 1 SEA CADET GUN RACE

5.00 pm PRESENTATION OF VINTAGE VEHICLE PRIZES ADJACENT TO RALLY OFFICE

**SIDESHOWS**

**FUN FAIR**

**VINTAGE VEHICLES**

**STATIONARY ENGINES**

**AUTOJUMBLE STALLS**

*Scotch Beef Specialist*  
**EVDEN BUTCHERS**  
OPEN ALL WEEK EXCEPT MONDAY (CLOSED ALL DAY)  
**YOUR LOCAL BUTCHER**  
*Home Freezer Service  
Easy Parking*  
**6 HARVIL ROAD, HAREFIELD**  
(Last shop down Harvil Road past Church)  
Telephone: Harefield 3214

**GRAND BARBEQUE**  
**Gastronomic Delights**

**REFRESHMENT TENT**

\* TEA  
\* COFFEE  
\* SANDWICHES  
\* CAKES

**Pam & Alan Sandel**  
welcome you to the  
**WHITE HORSE**  
(THE SPUD PUB)  
Hot & Cold Food 7 days a week  
Real Ale — Beer Garden  
Children's Room  
**A BENSKIN'S HOUSE**

# THE HAVERETTES GIRLS MARCHING BRASS BAND

This self-supporting group, whose ages range from 9 to 18 years do a grand job in helping to raise funds for charities. They travel all over this country and have been to Belgium and Germany. They are "twinned" with the Ludwigshafen band and also with the Oggersheim band with whom they have recently spent a week's visit. They are holders of the "Mayor's Award" for being such good ambassadors for their home town. Members of the band come and go, and today's band consists of many new younger recruits appearing for the first time in public. We would like to welcome them to Harefield and wish them well in their fund raising efforts.

---

## VINTAGE VEHICLE AND STATIONARY ENGINES

This year we are once again pleased to announce the presence of the ever popular vintage vehicle display at the Carnival. It will consist of cars, trucks, motor-cycles, farm tractors and stationary engines. The years of manufacture range from the early 1900's to the beginning of the 1970's for classic vehicles. In many cases various forms of farm implements will be driven from the many stationary engines on display.

Prizes will be awarded to winners of the different classes of vehicles. Don't forget to support the auto-jumble stalls where one can buy various bits for old motors. We extend a warm welcome to all out visitors and trust that our display will give you pleasure.

*Programmes  
Courtesy of*

*The Creative*  
**NETWORK**

HEYBRIDGE HOUSE THE CAUSEWAY MALDON ESSEX  
TELEPHONE 0621 58814

**LOSE WEIGHT NOW!**

**Ask Me How**

**GWEN**

**Harefield 2320**

**HERBALIFE DISTRIBUTOR**

**WORSDELL AND  
VINTNER**  
Solicitors

High St. Harefield  
Tel. Harefield 4713

**H.C.A. DANCE CENTRE  
FOR THE YOUNG**

Dancing classes for the young  
5 year old and above.

Saturday Mornings 9 am

Ballroom – Latin – Old Time  
and Disco

Qualified I.D.T.A. instructors  
Contact Edith or Reg on  
Harefield 2621

**SEAGLIFFE**  
**Holiday Flats**  
Overlooking the Sea in  
glorious North Devon

TOM and MARY (Ex Harefield)  
TUCKER

Berrynarbor, Devon EX34 9SP  
Tel: 0271 88 3273

**CARNIVAL PROCESSION**

AS in previous years the Procession will assemble in Moorhall Road, South Harefield, by the Horse and Barge.

The Procession will leave Moorhall Road at 12.30 p.m. go up Church Hill, through the village and will enter the Hospital grounds by the gate next to the Chalfont Line Garage at approximately 1.30 p.m.

We are hoping for even more floats in this year's procession to give a really colourful and entertaining start to the Carnival.

Although a lot of work goes into the preparation of the floats, those taking part have great fun and the effort is appreciated by everyone lining the route.

Judging will be for the best floats in the Carnival. There will be four classes: The Most Attractive; The Most Original; The Most Amusing; and The Best Individual Entry.

---

There will be a fancy dress competition for both adults and children. Judging will take place shortly after the arrival of the procession. Prizes will be awarded for the best adult, best child and best team.

---

# NORTH THAMES GAS

PRESENTS

## HEALTHIER COOKING

at the

## Harefield Carnival

LIVE  
COOKERY  
DEMONSTRATION  
2 pm — 5 pm

VISIT  
OUR GAS  
SHOW VAN

SEE OUR  
WIDE RANGE  
OF COOKERS  
& FIRES

**\* EXTRA £10. OFF MARKED \***

PRICES OF APPLIANCES IN OUR  
RUISLIP GAS SHOWROOM

71 HIGH STREET, RUISLIP

WITH THIS ADVERT IF

PRESENTED BEFORE 30 JUNE 1986

A GOOD DEAL COMES  
WITH EXPERIENCE

**British Gas**  
North Thames